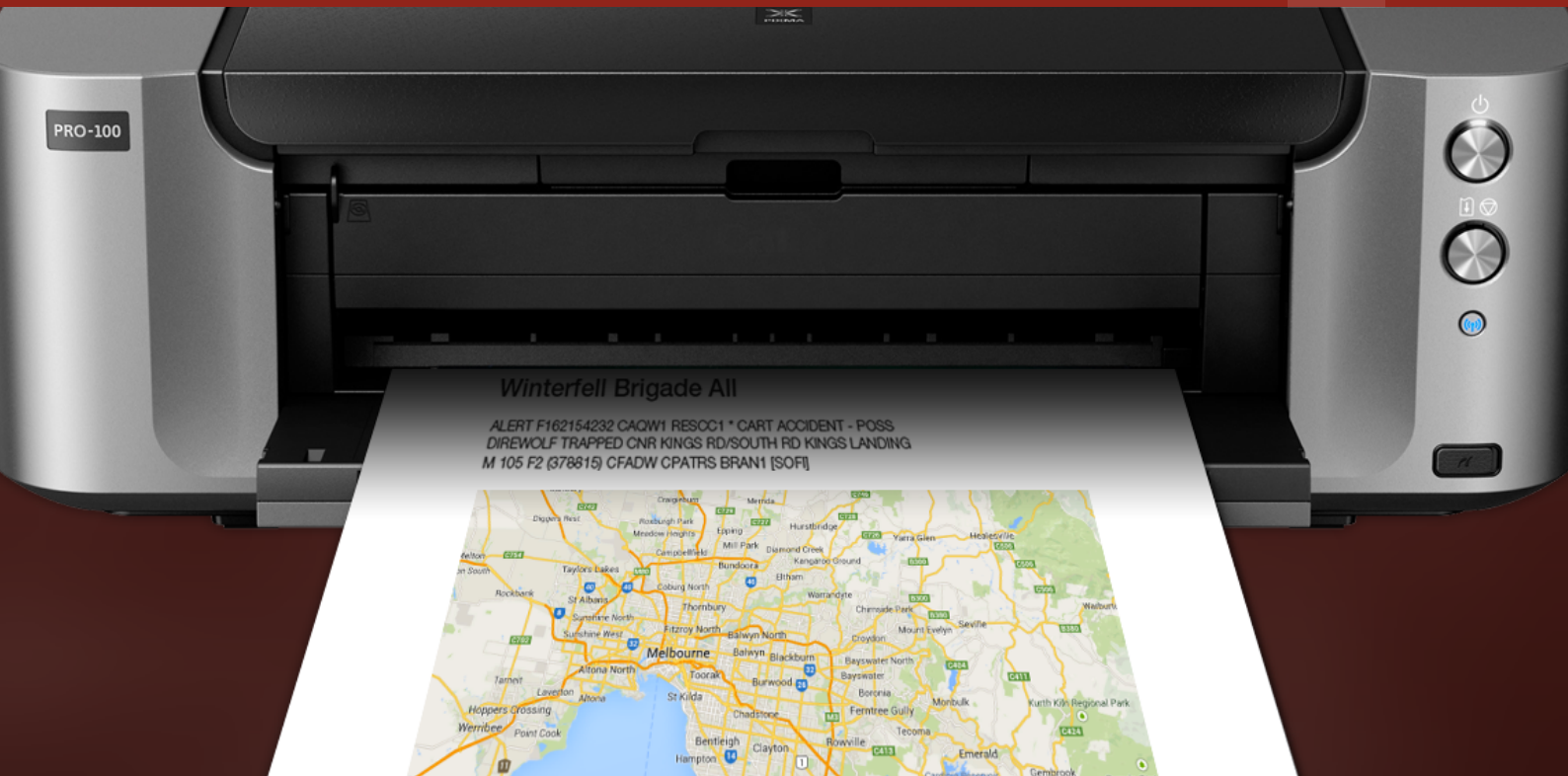
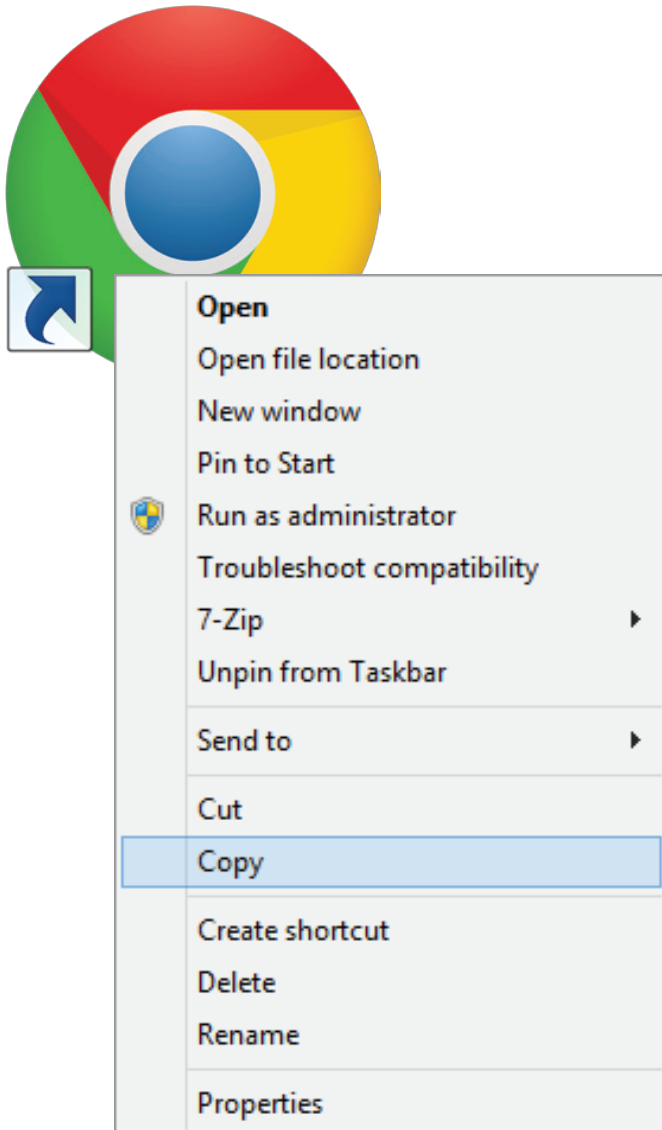


# Station Platform

## AUTO-PRINT GUIDE





## Lets get started!

First you will need to create a new shortcut for your web browser.

We recommend using Google Chrome. If you don't already have Chrome, it's completely free to download:

<http://www.google.com/chrome/>

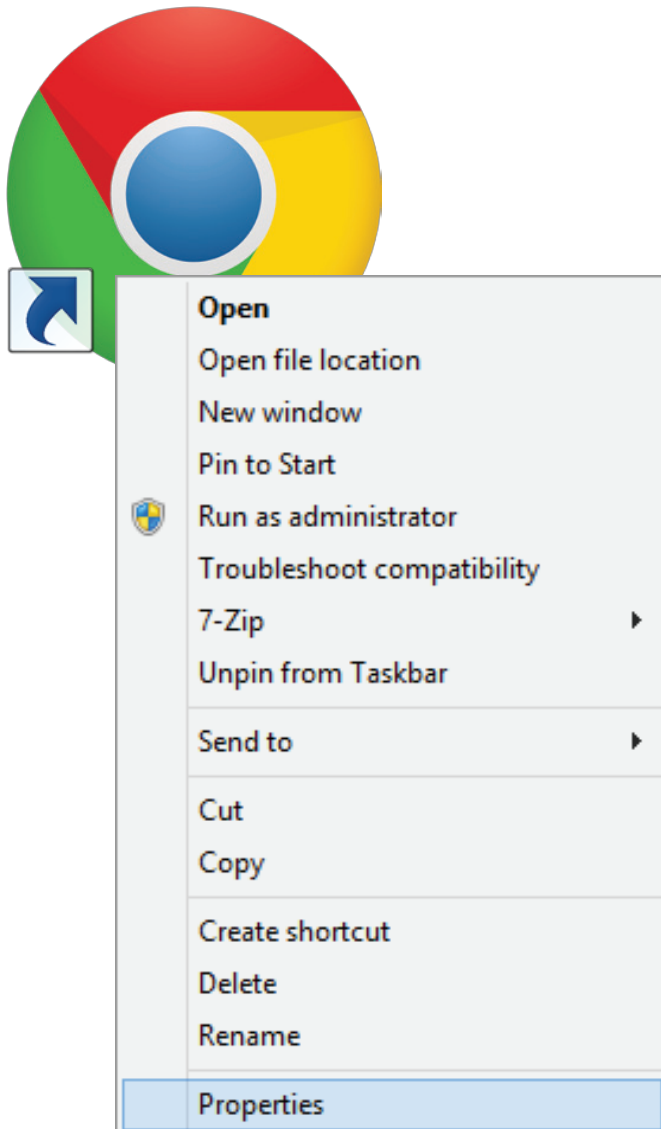
### Creating the Shortcut

To create the auto-print shortcut, navigate to your desktop and right-click on the Google Chrome shortcut.

Copy and paste the shortcut, giving your new one a new name like 'Google Chrome Auto-print'.

The next step is to edit the 'Properties' of your new shortcut.

It's important at this stage not to have the browser open, so make sure you close all instances of Google Chrome before proceeding.



### Right click on your new shortcut

You should now see a toolbar popup onto your screen.

Select '**Properties**' from the toolbar to open up the properties window.



## Google Chrome Auto-print Properties



General

Shortcut

Compatibility

Security

Details



Google Chrome Auto-print

Target type: Application

Application

Target: "C:\Program Files (x86)\Google\Chrome\Applicati

Start in: "C:\Program Files (x86)\Google\Chrome\Applicati

Shortcut key: None

Run: Normal window

Comment: Access the Internet

Open File Location

Change Icon...

Advanced...

OK

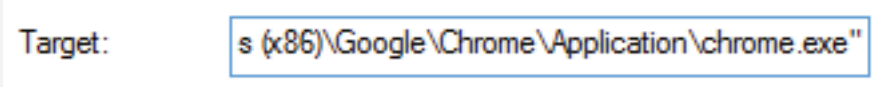
Cancel

Apply

## Shortcut Properties window

You should now see a new window popup on the screen with different property options

Click your mouse cursor inside the “Target:” text field, and navigate through to the end.



Target: s (x86)\Google\Chrome\Application\chrome.exe"

(Every computer is different so different paths may display in the text field.)

At the very end of the path, just outside the talking marks add in the text:

**‘ --kiosk-printing ’**

In our example, our new “Target:” path would be:

**"C:\Program Files (x86)\Google\Chrome\Application\chrome.exe" --kiosk-printing**

(Don't forget to include the space before ' --kiosk-printing')

## Open up Chrome

Double click your new Google Chrome shortcut to open up the browser.



Log into the BART Station Platform as you would normally

Username
Password
Login









Level 2, 420 Burwood Hwy Wantirna South | PH: (03) 9264 8888 | E: [info@emerg.com.au](mailto:info@emerg.com.au) | [www.bart.emerg.com.au](http://www.bart.emerg.com.au)