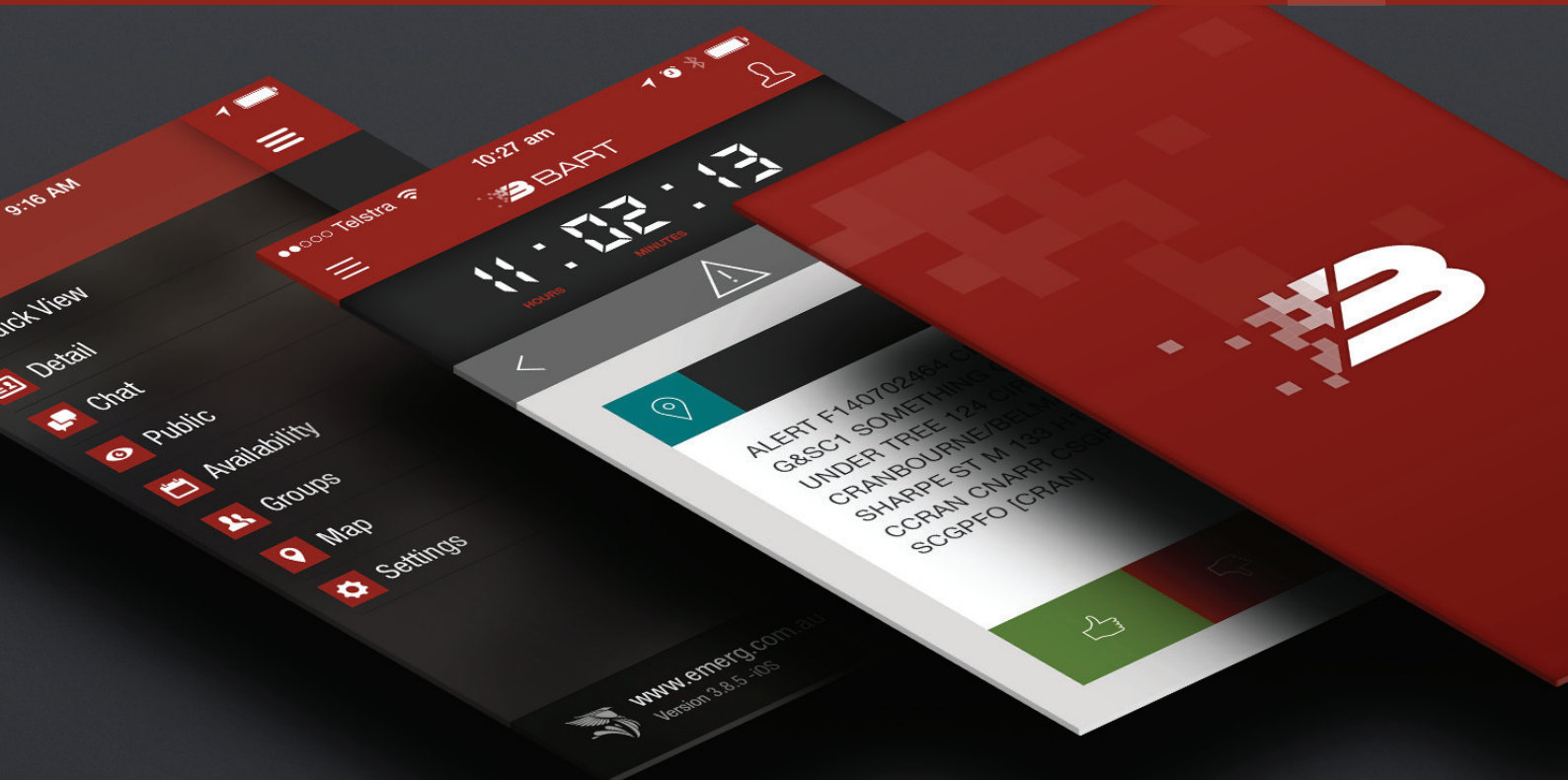
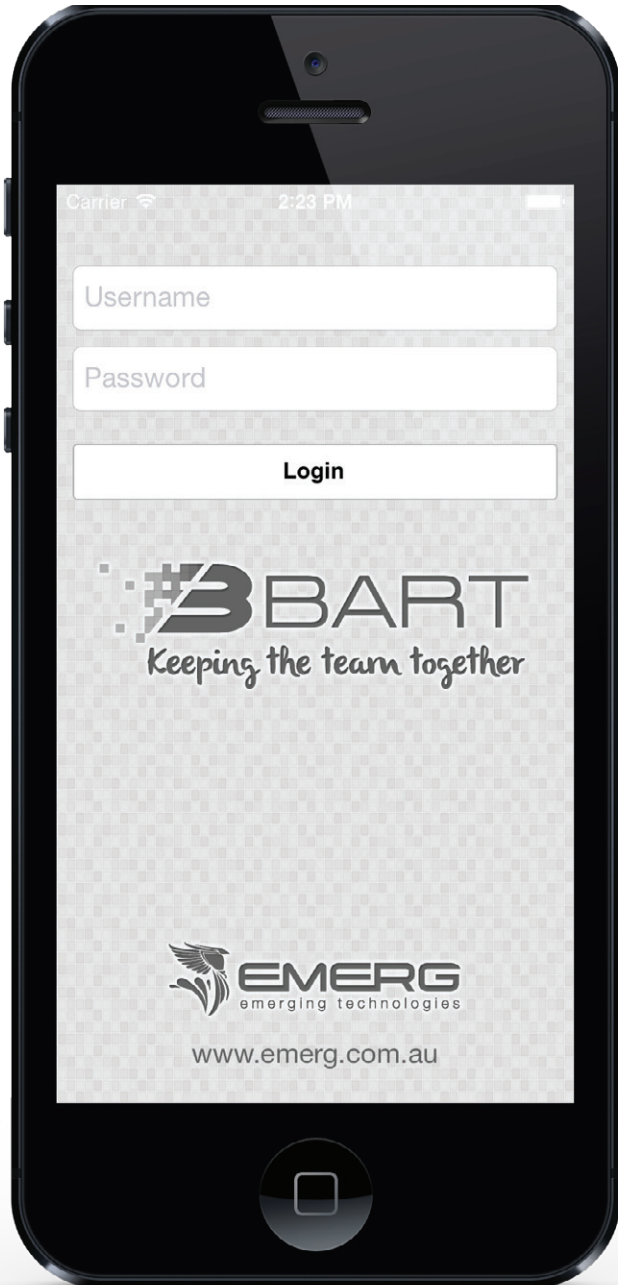


SmartPhone Application

WALKTHROUGH GUIDE

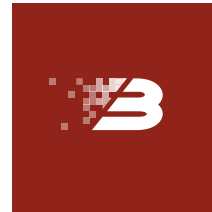




Lets get started!

First you will need to download the BART app for your device.

Open up your BART app and enter in your login details.



Please Note: If you don't have log in details, please make sure you have registered first via the BART website:

www.bart.emerg.com.au

Landing Page

Once you're logged in, you will see a screen that looks like this:

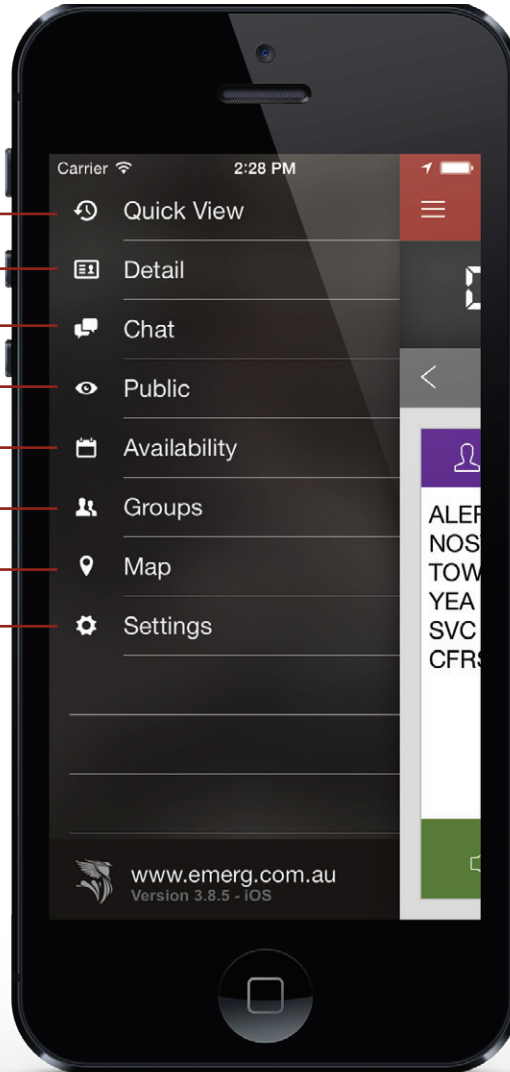


Menu

To view a list of menu items, press the menu button



Select from the list of available menu items



Quick View

The quick view menu option takes you to the main message screen.



Please see the
'Landing Page'
interface for
details.

Detail View

The detailed menu option displays a list of all your recent messages.

Alert 

Details 

Time 

Accept 

Decline 

Other 

Map 

Please Note:
The interface has been condensed to allow for multiple messages to be viewed at once.

Carrier 2:28 PM

BART

Today

VERMONT BRIGADE 2:14 PM
ALL
ALERT: F140801321 EMRG2 NOSTG1 TRAILER FIRE 1KM TOWARDS FOREST HILL CNR YEA RD/FOXES LANE WANTIRNA SVC 6450 K11 (596393) CEMRG CFRST [EMRG]

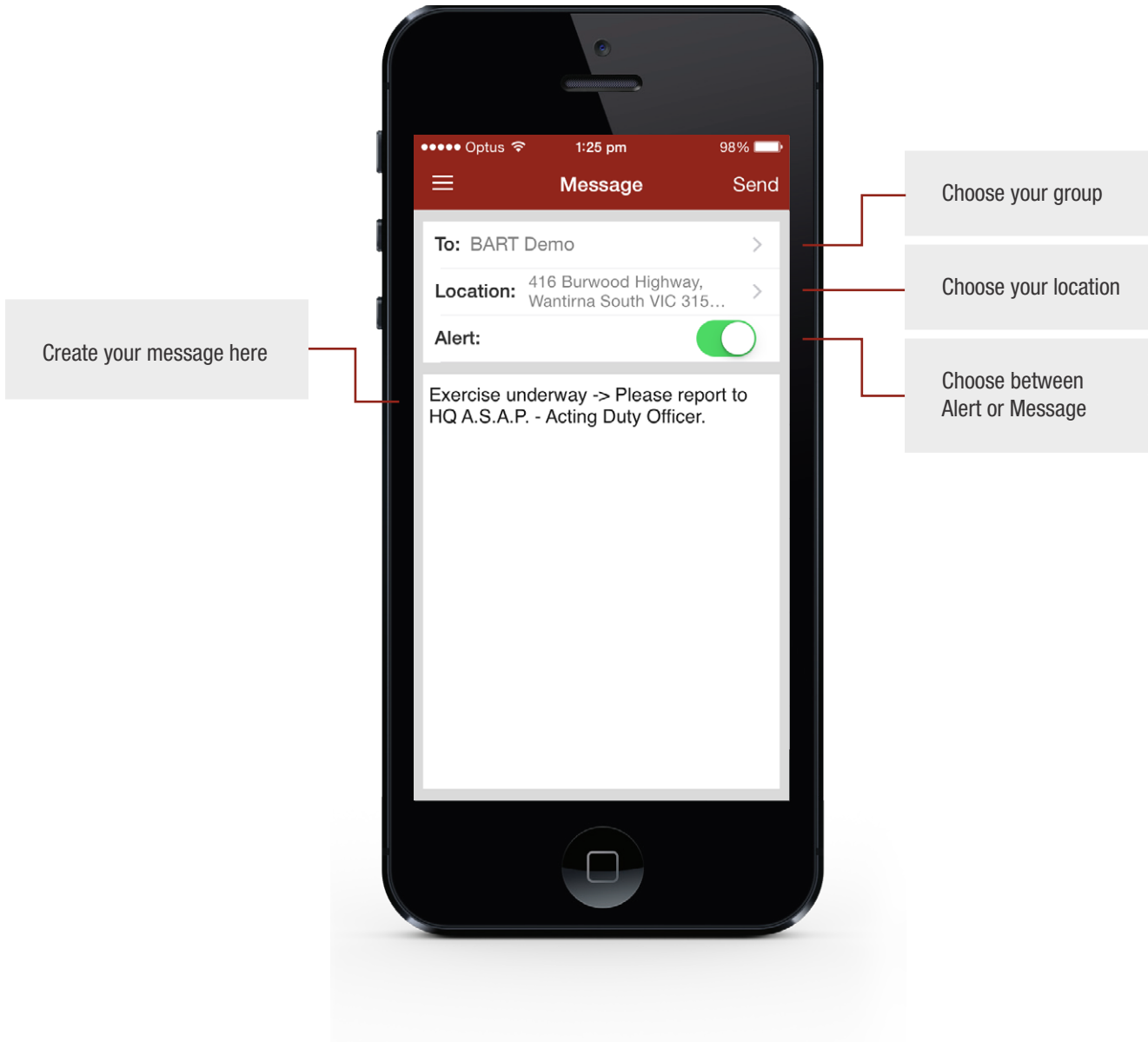
VERMONT BRIGADE 2:14 PM
ALL
Reminder - Training tonight, 1930 hours at station. Training tonight will be on small pump and equipment maintenance. Thanks, Angus. [EMRG]

VERMONT BRIGADE 2:13 PM
ALL
ALERT: F140600790 STRUC1 BRIGADE CEMRG REQUIRED 120 DAVIDS CREEK RD VERMONT / VALLY FARM RD //STRAW FARM RD M 270 CS (690346) CEMRG [EMRG]

VERMONT BRIGADE 2:13 PM
ALL
ALERT: F140413558 EMRG1 STRUC1 COONARA FIRE 23 HAWKEND DR KINGLAKE /KINGLAKE-GLENFIRE RD //THOMSON LANE M 380 G7 (539459) CVERM CFHIL [EMRG]

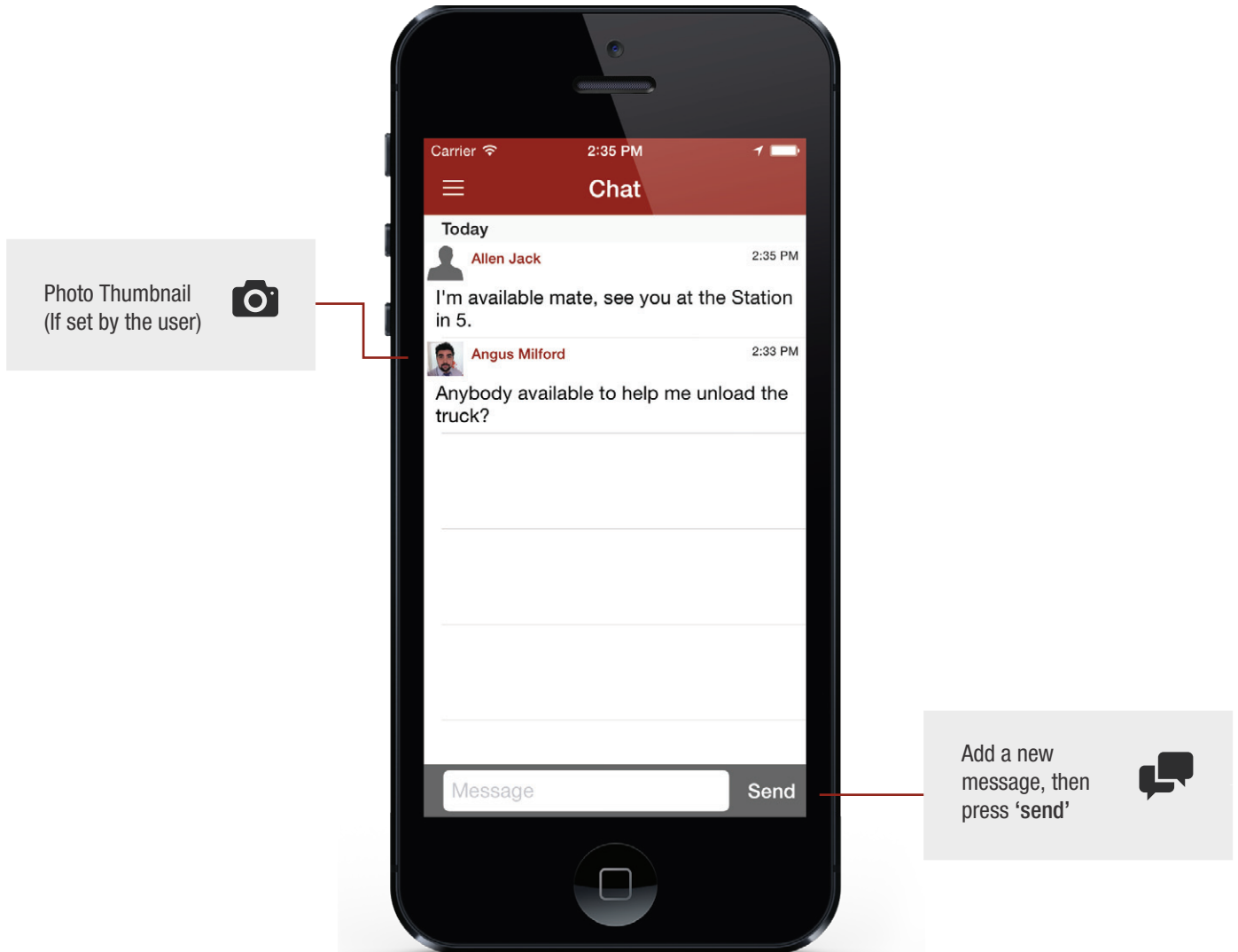
In-App Messaging

Use the messaging feature instead of, or in addition to a direct feed.



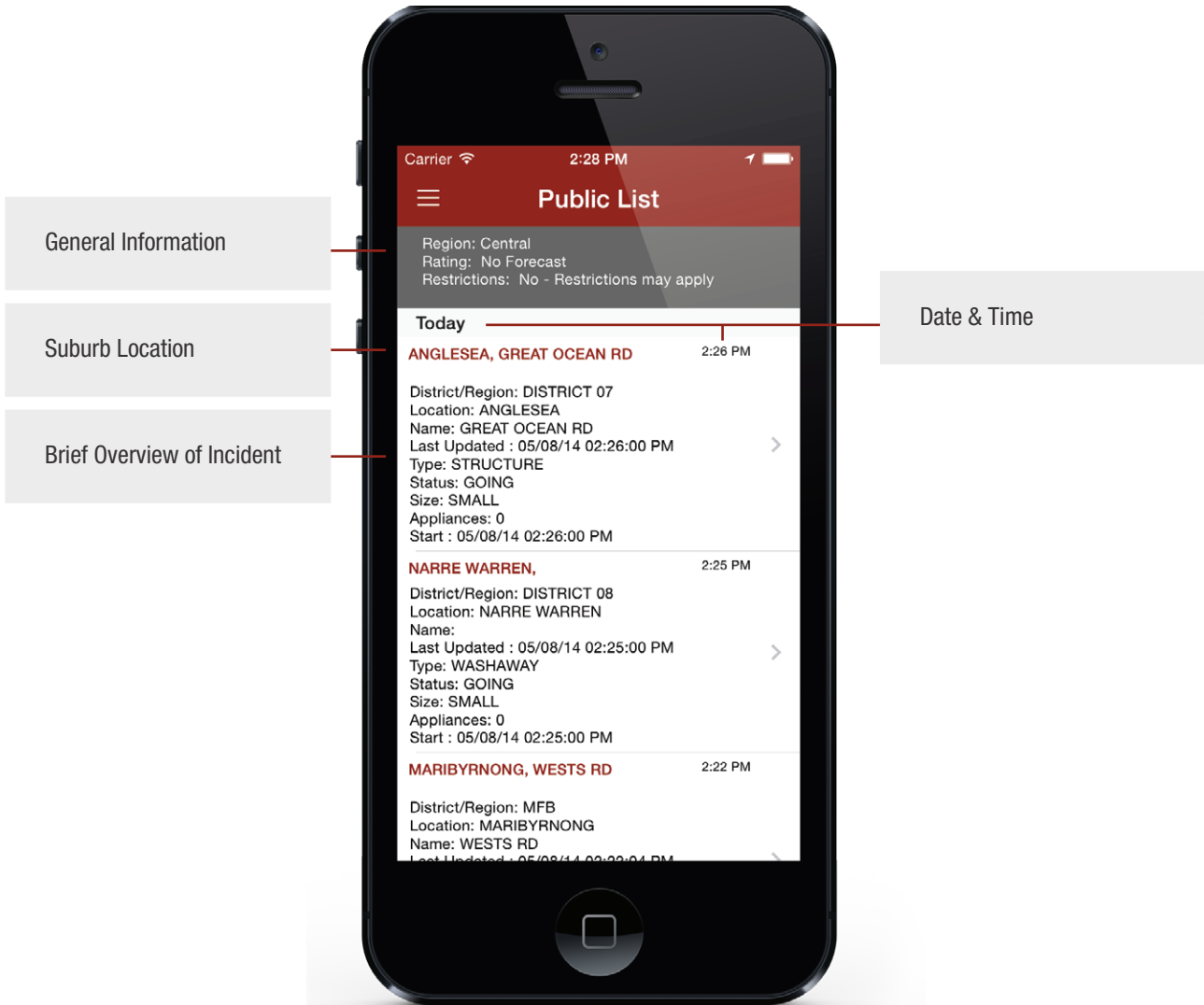
Chat

The chat menu option allows you to chat freely with other members of your team.



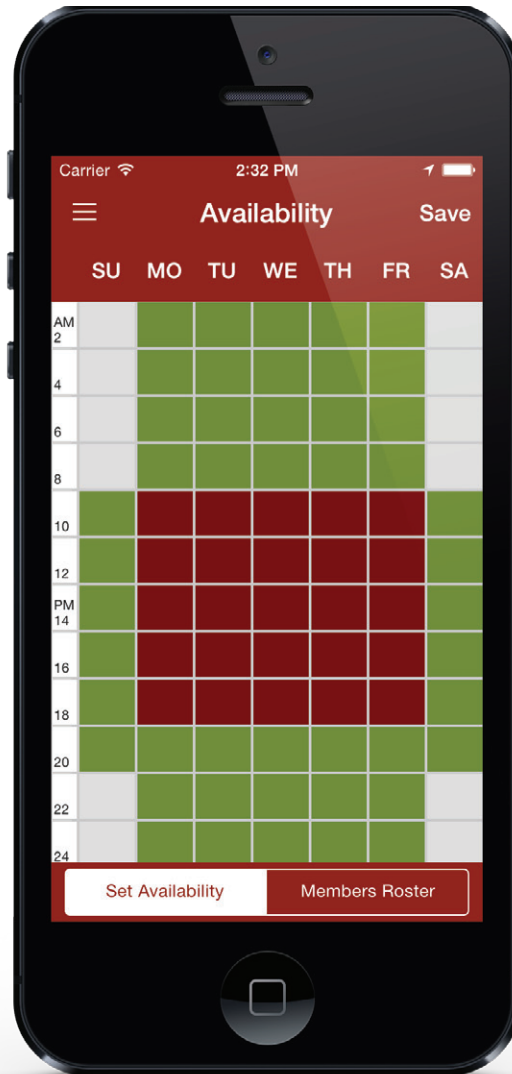
Public List

The public list displays a feed of information that is available to the general public.



Set Availability

You can set your availability for the week ahead.



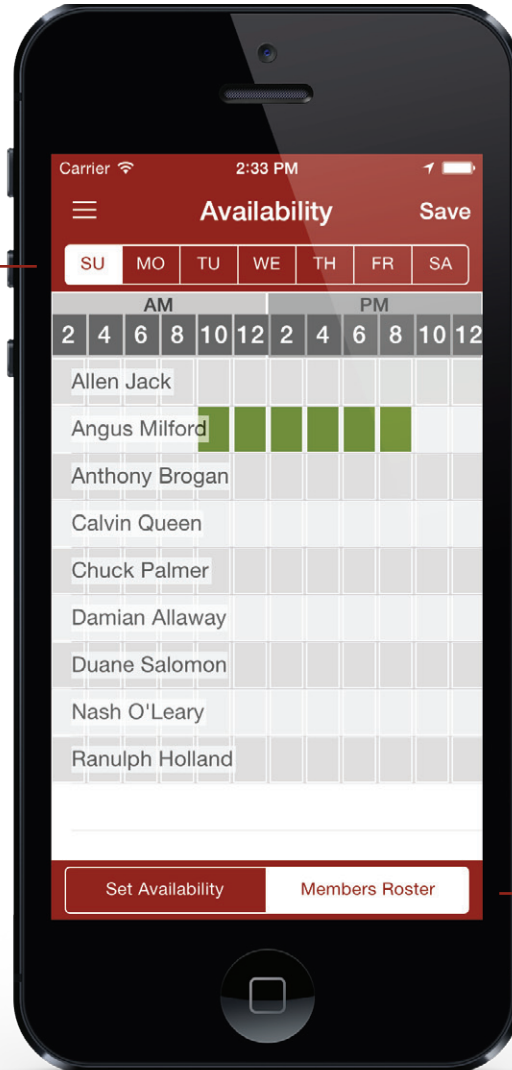
Tap Once
for available (green)

Tap Twice
for unavailable (red)

Members Roster

View the availability of other members of your team.

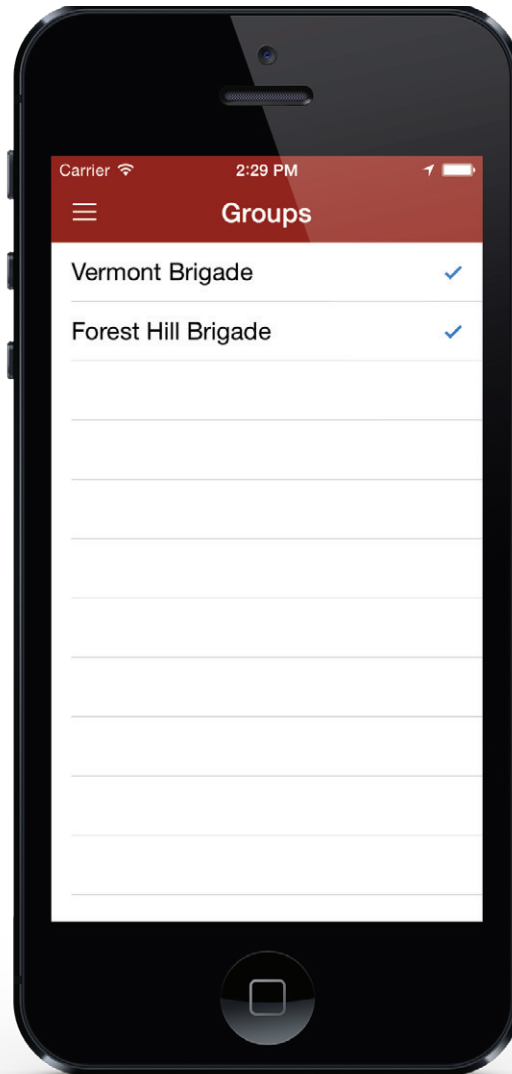
Select the day that you would like to view



Toggle between
'Set Availability' &
'Members Roster'

Groups

View the groups you belong to and choose the groups that you want to receive data for.



Tap on a group to tick or un-tick.

Un-ticking a group will stop you from receiving notifications from that group



Map

View your **current location**, the **incident location** and the route between each point.

Selection:

Displays the location of your selected incident

All Alerts:

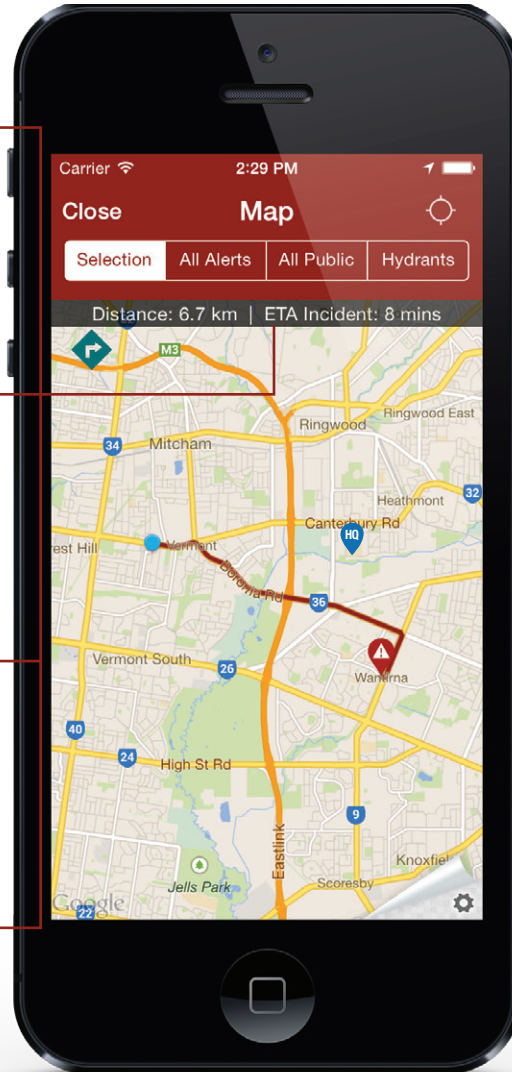
Displays the location of all alerts

All Public:

Displays the location of all public data

Hydrants:

Displays the location of all hydrants







Distance:

from your location to the incident or HQ

ETA:

Estimated time of arrival to incident

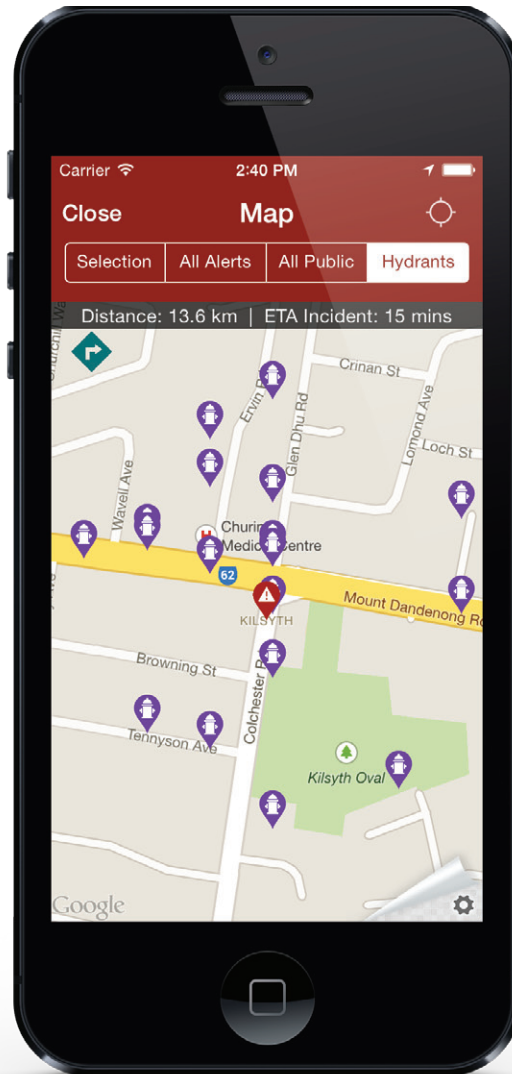
-  Your Location
-  Incident Location
-  Local Head Quarters
-  Toggle routing to incident or to HQ

Map (Hydrants)

This option displays the location of each fire hydrant in your area.



Hydrant markers
displayed on the map



Settings

Update your user details, overall availability and toggle notifications on or off.

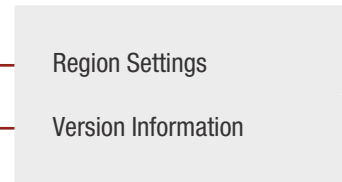
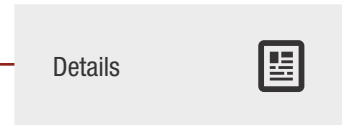
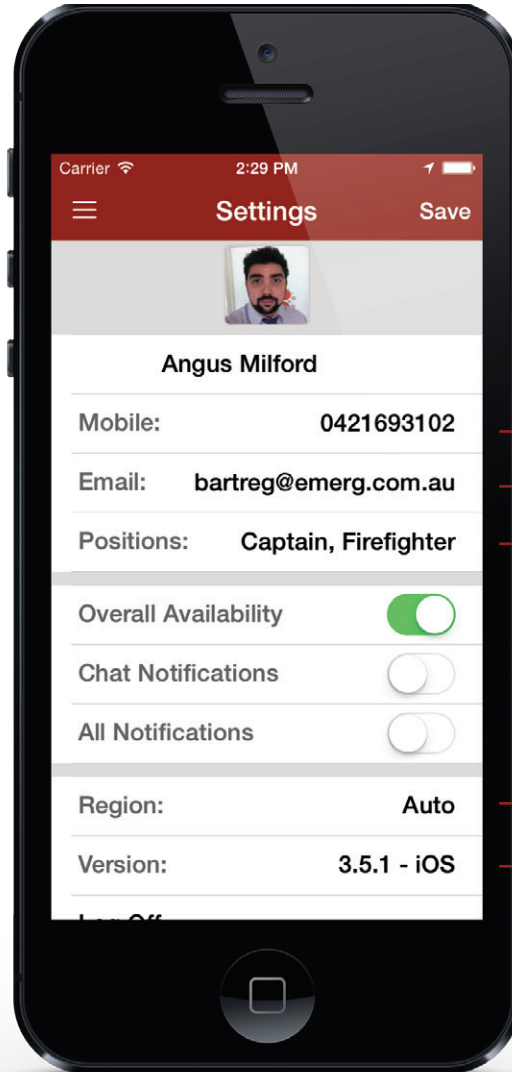


Toggle Options

Overall Availability
Override all existing rostering settings

Chat Notifications
Choose to be notified when a new chat message is created

All Notifications
Turn all notifications off or on



Attendees

View those members who are attending or not attending an incident.

Qualifications

View the qualifications of each team member



Available

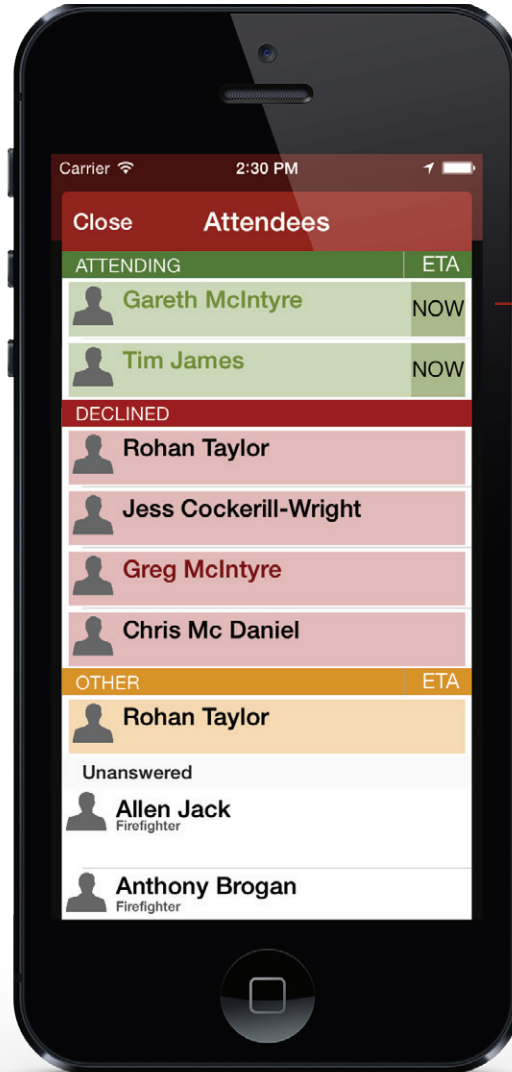
Users name will display green

No Available:

Users name will display red

Not Set:

Users name will display black



ETA

Displays the estimated time of arrival for each attending team member



Tap a User
to bring up their profile



395 Canterbury Rd Vermont | PH: (03) 9264 8888 | E: info@emerg.com.au | www.bart.emerg.com.au