

BART Fire Tree

'Connecting Communities'



Roleystone
Volunteer Fire & Rescue Service
Station 198



Introduction

- The BART Fire Tree is a supplementary tool that further enhances the **Bushfire Ready** program. It does not take away a users responsibility for sourcing their information in emergencies and does not replace the current official information sources e.g. Emergency WA.
- All messaging is generic and non-specific in nature. It direct users to the correct locations to monitor for further information (<https://emergency.wa.gov.au>)
- The utilisation of BART within the **Bushfire Ready** program modernises communications inline with current digital times.
- The project has been trialled over the 2022/23 summer period.



State Strategic Control Priorities

DFES State Strategic Control Priorities provided within the State Emergency Management policy

- Protection and preservation of life
- ***Issuing community information and warnings***
- Protection of critical infrastructure and community assets
- Protection of residential property
- Protection of assets supporting individual livelihood and community financial stability
- Protection of environmental and heritage values



Background to the project

- The Brigade's Community Engagement Team identifying **Bushfire Ready** Street Coordinators were not actively included in the Brigade's activities
- Challenging and outdated communication issues were main concerns
- Extensive research and robust discussions identified BART as the ideal platform
- The CET revisited the idea in Nov 22 as plagued with communication issue
- Collaboration with BART Solutions – realisation of the digital fire tree on BART
- **Bushfire Ready** - a grass-roots program with BART Fire Tree providing an additional level of resilience and empowerment within the community base.



What is BART and why are we using it?

- Broadcast, Alert, Respond, Turnout (BART) is cloud-based software designed for emergency services personnel to manage incident response and day to day operations.
- Is used by numerous private sector and government agencies. Over 90,000 end users are currently active on the system.
- BART has been used by the brigade for the past 6 years for all operational activities since its inception.
- The BART app provides real-time communication and can work with mobile phone or Wi-Fi service
- BART gives better visibility of coordinators and end users acknowledging or re-acting to alerts and messages, especially with the thumbs up button
- Roleystone VFRS has worked with the BART team to develop and incorporate the ***Bushfire Ready*** program into a parallel system, allowing the community to be more resilient and better informed



How does the BART Fire Tree work?

The BART Fire Tree is wholly managed by the Roleystone VFRS CET. The CET has developed a number of documents and presentations to direct and aide the implementation and management of the system. These include:

- RVFRS BART Operating Guidelines
- RVFRS BART Authorisation form
- RVFRS BART Residents Guide
- RVFRS BART PowerPoint for Street Coordinators and end users

The CET has the ability to send messages in the following ways using the various broadcast tags:

- ***Roleystone Message to all*** – Directly sends the message to all users in the system
- ***BART Roleystone Town Coordinators*** – Message is only received by every Street Coordinator only
- ***Araluen Message*** – Message is received by all users in the ‘Araluen Zone’ (specific streets)

Further broadcast tags can be added into the system if requires it.



How does the BART Fire Tree work?

Street Coordinators have the ability send a message to their street only, using the dedicated tag for that street.

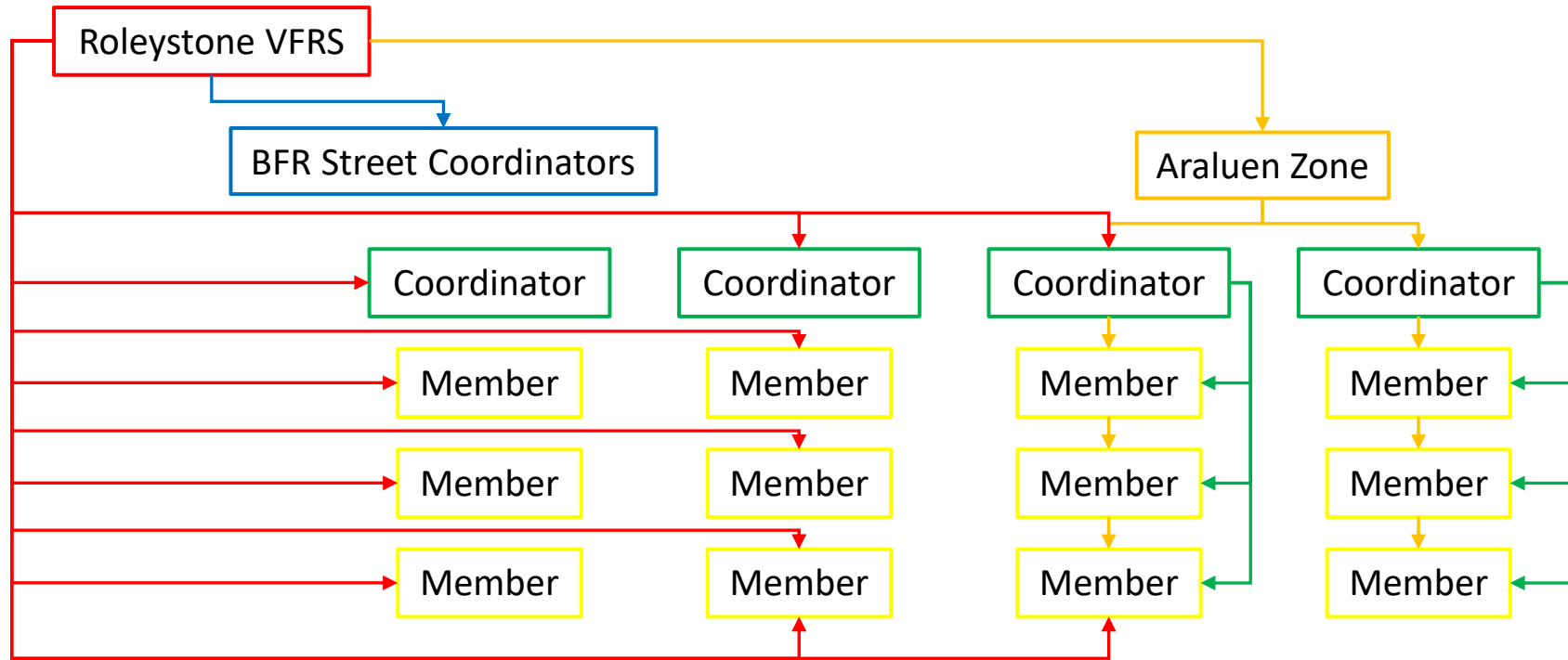
Each street group operates independently of each other and members of a particular street cannot see others in other streets. All discussions, events and group broadcasts stay at the local level and it is at the discretion of the Street Coordinator. The RVFRS CET can monitor all street groups through the web app.

As apart of our trial, there are currently 30 street groups within the Roleystone VFRS BART Fire Tree with 539 end users. The trial was limited to the participants of the brigades ***Bushfire Ready*** program. This represents approximately 22% of the Roleystone streets covered and 10.5%* of the district's adult population.

The project has been restricted and not promoted to the wider community.



How is the BART Fire Tree structured?



Roleystone message to all

BART Roleystone Town Coordinators

Araluen Message

Individual Street

Broadcast Tags:

